

Appendix

Employees in Each Salary Schedule under the NPA Remuneration Scheme

(As of April 15, 2008)

Salary Schedule	Definition	Number of Employees
Administrative Service (I)	All employees not subject to any other salary schedule (excluding part-time employees): general office workers, diplomats, etc.	172,970 (58.2%)
Administrative Service (II)	Guards, office maintenance workers, drivers, machine operators, telephone operators, etc.	5,203 (1.8%)
Professional Administrative Service	Air traffic control officers, plant quarantine officers, examiners at the Patent Office, etc.	8,035 (2.7%)
Taxation Service	Employees in charge of assessing and collecting taxes at the National Tax Agency	54,050 (18.2%)
Public Security Service (I)	Police officers, Imperial guards, immigration security officers and prison guards	21,780 (7.3%)
Public Security Service (II)	Employees of the Public Prosecutors Office, the Public Security Intelligence Agency, the Reformatories, etc.	23,059 (7.8%)
Maritime Service (I)	Captains, mates, engineers, radio operators, etc. aboard ocean-going or coastal vessels	224 (0.1%)
Maritime Service (II)	Employees aboard vessels who are not subject to the Maritime Service (I) Salary Schedule	394 (0.1%)
Educational Service (I)	Professors, lecturers, etc. at national educational institutions equivalent to universities	134 (0.0%)
Educational Service (II)	Teachers, nurse-teachers, etc. at national educational institutions equivalent to senior high schools	122 (0.0%)
Research Service	Employees in charge of laboratory or research work at national laboratory or research institutes	1,753 (0.6%)
Medical Service (I)	Medical doctors and dentists	1,511 (0.5%)
Medical Service (II)	Pharmacists, dietitians, etc.	1,046 (0.4%)
Medical Service (III)	Nurses, assistant nurses, public health nurses and maternity nurses	4,894 (1.6%)
Welfare Service	Employees in charge of guiding or nursing people or children at national social welfare institutions	286 (0.1%)
Designated Service	Administrative Vice-Ministers, Agency heads, heads of large laboratory or research institutes, etc.	903 (0.3%)
Specialized Fixed-term Employees	Fixed-term employees providing a specialized service with use of advanced knowledge and experience	699 (0.2%)
Fixed-term Researchers	Researchers recruited for a fixed term to engage in advanced studies	159 (0.1%)
Total		297,222 (100.0%)

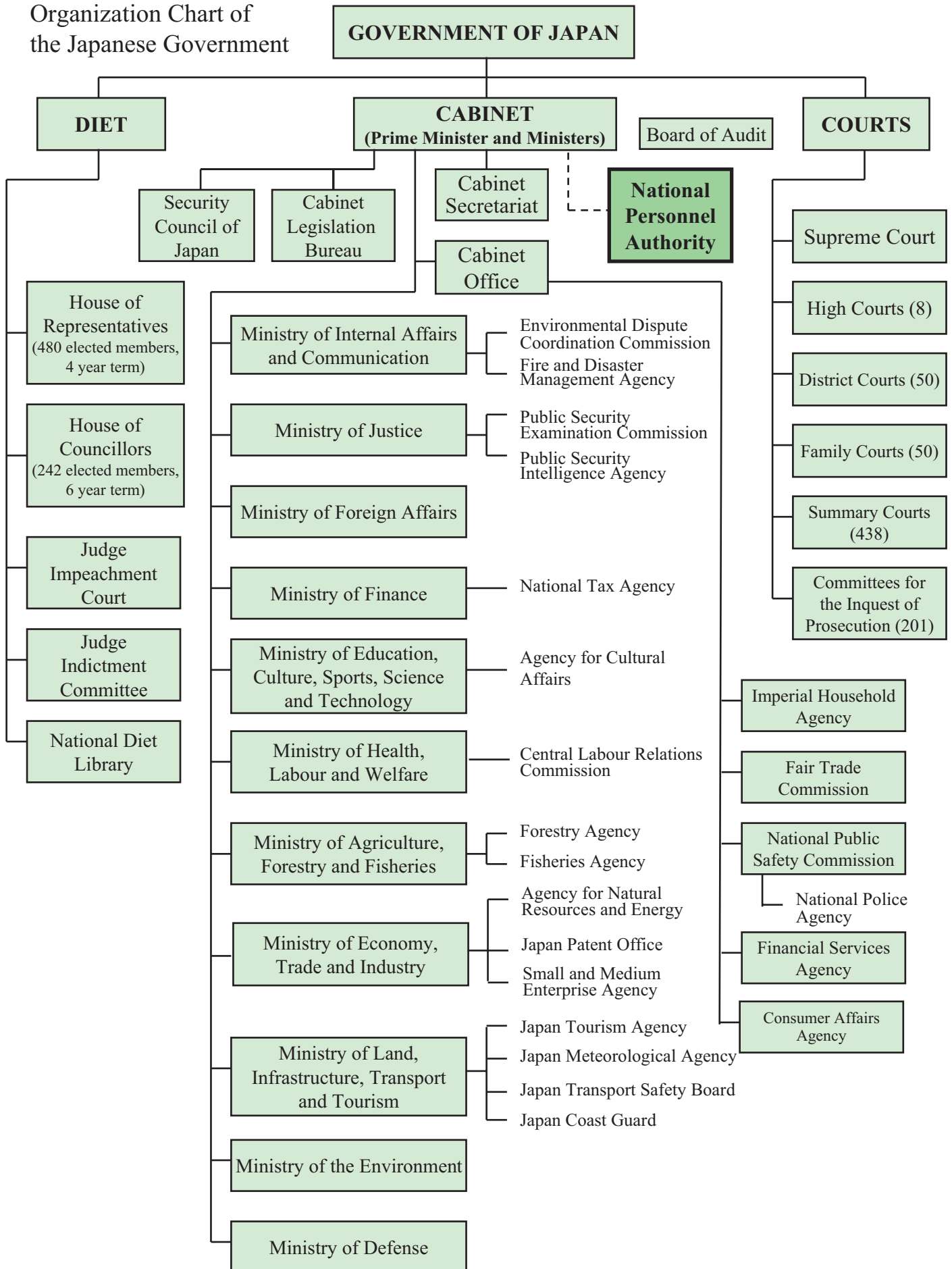
(Note) "Number of employees" refers to incumbent employees, excluding new employees and re-employed employees.

History of NPA Remuneration Recommendations

NPA Remuneration Recommendation			Diet Decision	
No.	Date	Contents	Date of Implementation	Contents
1	Dec. 10, 1948	6,307 yen as the standard of remuneration	Dec. 1, 1948	6,307 yen established as the standard of remuneration
2	Dec. 4, 1949	7,877 yen as the standard of remuneration	—	Recommendation rejected
3	Aug. 9, 1950	8,058 yen as the standard of remuneration	Jan. 1, 1951	7,981 yen established as the standard of remuneration
4	Aug. 20, 1951	11,263 yen as the standard of remuneration	Oct. 1, 1951	10,062 yen established as the standard of remuneration
5	Aug. 1, 1952	13,515 yen as the standard of remuneration	Nov.1, 1952	12,820 yen established as the standard of remuneration
6	Jul. 18, 1953	15,480 yen as the standard of remuneration	Jan. 1, 1954	15,483 yen established as the standard of remuneration
—	Jul. 19, 1954	(No recommendation ; report only)	—	—
7	Jul. 16, 1955	Increase in special allowances	Dec .14, 1955	End-of-term allowance increased
8	Jul. 16, 1956	Rationalization of the salary system	Apr. 1, 1957	Implemented with partial amendment
9	Jul. 16, 1957	Increase in end-of-term allowance Establishment of commuter allowance	Nov.18, 1957 Apr. 1, 1958	Implemented as recommended by NPA
10	Jul. 16, 1958	Increase in initial salary	Apr. 1, 1959	(Same as above)
11	Jul. 16, 1959	Increase in remuneration for mid-career employees	Apr. 1, 1960	(Same as above)
12	Aug. 8, 1960	12.4% increase in remuneration	Oct. 1, 1960	(Same as above)
13	Aug. 8, 1961	7.3% increase in remuneration	Oct. 1, 1961	(Same as above)
14	Aug. 10, 1962	9.3% increase in remuneration	Oct. 1, 1962	(Same as above)
15	Aug. 10, 1963	7.5% increase in remuneration	Oct. 1, 1963	(Same as above)
16	Aug. 12, 1964	8.5% increase in remuneration	Sep. 1, 1964	(Same as above)
17	Aug. 13, 1965	7.2% increase in remuneration	Sep. 1, 1965	(Same as above)
18	Aug. 12, 1966	6.9% increase in remuneration	Sep. 1, 1966	(Same as above)
19	Aug. 15, 1967	7.9% increase in remuneration	Aug. 1, 1967	(Same as above)
20	Aug. 16, 1968	8.0% increase in remuneration	Jul. 1, 1968	(Same as above)
21	Aug. 15, 1969	10.2% increase in remuneration	Jun. 1, 1969	(Same as above)
22	Aug. 14, 1970	12.67% increase in remuneration	May 1, 1970	(Same as above)
23	Aug. 13, 1971	11.74% increase in remuneration	May 1, 1971	(Same as above)
24	Aug. 15, 1972	10.68% increase in remuneration	Apr. 1, 1972	(Same as above)
25	Aug. 9, 1973	15.39% increase in remuneration	Apr. 1, 1973	(Same as above)
26	Jul. 26, 1974	29.64% increase in remuneration (including 10% increase in remuneration recom-mended on May 30, 1974 as a tentative measure)	Apr. 1, 1974	(Same as above)
27	Aug. 13, 1975	10.85% increase in remuneration	Apr. 1, 1975	(Same as above)
28	Aug. 10, 1976	6.94% increase in remuneration	Apr. 1, 1976	(Same as above)
29	Aug. 9, 1977	6.92% increase in remuneration	Apr. 1, 1977	(Same as above)

NPA Remuneration Recommendation			Diet Decision	
No.	Date	Contents	Date of Implementation	Contents
30	Aug. 11, 1978	3.84% increase in remuneration	Apr. 1, 1978	(Same as above)
31	Aug. 10, 1979	3.70% increase in remuneration	Apr. 1, 1979 (Oct. 1,1979)	(Same as above) (As for the designated service)
32	Aug. 8, 1980	4.61% increase in remuneration	Apr. 1, 1980 (Oct. 1,1980)	(same as above) (As for the designated service)
33	Aug. 7, 1981	5.23% increase in remuneration	Apr. 1, 1981 (Apr. 1,1982)	Implemented with partial amendment (As for the designated aervice)
34	Aug. 6, 1982	4.58% increase in remuneration	—	Recommendation rejected
35	Aug. 5, 1983	6.47% increase in remuneration	Apr. 1, 1983	Implemented with amendment (2.03%)
36	Aug. 10, 1984	6.44% increase in remuneration	Apr. 1, 1984	Implemented with amendment (3.37%)
37	Aug. 7, 1985	5.74% increase in remuneration	Jul. 1, 1985	Implemented as recommended by NPA
38	Aug. 12, 1986	2.31% increase in remuneration	Apr. 1, 1986	(Same as above)
39	Aug. 6, 1987	1.47% increase in remuneration	Apr. 1, 1987	(Same as above)
40	Aug. 4, 1988	2.35% increase in remuneration	Apr. 1, 1988	(Same as above)
41	Aug. 4, 1989	3.11% increase in remuneration	Apr. 1, 1989	(Same as above)
42	Aug. 7, 1990	3.67% increase in remuneration	Apr. 1, 1990	(Same as above)
43	Aug. 7, 1991	3.71% increase in remuneration	Apr. 1, 1991	(Same as above)
44	Aug. 7, 1992	2.87% increase in remuneration	Apr. 1, 1992	(Same as above)
45	Aug. 3, 1993	1.92% increase in remuneration	Apr. 1, 1993	(Same as above)
46	Aug. 2, 1994	1.18% increase in remuneration	Apr. 1, 1994	(Same as above)
47	Aug. 1, 1995	0.90% increase in remuneration	Apr. 1, 1995	(Same as above)
48	Aug. 1, 1996	0.95% increase in remuneration	Apr. 1, 1996	(Same as above)
49	Aug. 4, 1997	1.02% increase in remuneration	Apr. 1, 1997 (Apr. 1,1998)	(Same as above) (As for the designated service)
50	Aug. 12, 1998	0.76% increase in remuneration	Apr. 1, 1998	Implemented as recommended by NPA
51	Aug. 11, 1999	0.28% increase in remuneration	Apr. 1, 1999	(Same as above)
52	Aug. 15, 2000	0.12% increase in remuneration	Apr. 1, 2000	(Same as above)
53	Aug. 8, 2001	0.08% increase in remuneration	Apr. 1, 2001	(Same as above)
54	Aug. 8, 2002	2.03% decrease in remuneration	Dec. 1, 2002	(Same as above)
55	Aug. 8, 2003	1.07% decrease in remuneration	Nov. 1, 2003	(Same as above)
56	Aug. 6, 2004	(No recommendation on the standard of remuneration)	—	—
57	Aug. 15, 2005	0.36% decrease in remuneration	Dec. 1, 2005	(Same as above)
58	Aug. 8, 2006	(No recommendation on the standard of remuneration)	—	—
59	Aug. 8, 2007	0.35% increase in remuneration	Apr. 1, 2007	Implemented with partial amendment
60	Aug. 11, 2008	(No recommendation on the standard of remuneration)	Apr. 1, 2009	Implemented as recommended by NPA

Organization Chart of
the Japanese Government



Organization Chart of the NPA

