

Number and Type of Public Employees

In order to gain an overall overview of public employees, the classifications and numbers of public employees are shown below, including national public employees in the Special Service and local public employees.

Article 15 of the Constitution of Japan stipulates that: “The people have the inalienable right to choose their public officials and to dismiss them” (Paragraph 1), and that “All public officials are servants of the whole community and not of any group thereof” (Paragraph 2). “Public officials” in the constitutional sense therefore includes all officials affiliated to the legislative, administrative and judicial branches of government, including Diet members, as well as all local government officials, including assembly heads and administrative heads and their subordinates, encompassing all of the persons engaged in the public service on behalf of the people of Japan.

Public employees are broadly classified into Regular Service and Special Service employees, and the national public employees in the Special Service as described in the National Public Service Act (NPSA) could be broadly classified into the following categories: persons responsible for political affairs (Prime Minister, Ministers of State, etc.); cases in which it is logical to entrust the construction of a personnel system to the legislative and judicial branches in accordance with the constitutional principle of separation of power (judges and other court employees, national Diet employees); cases in which separate standards for treatment of status are appropriate because of the characteristics of the job (Defense Ministry personnel); and cases in which the characteristics of the job make it inappropriate to apply the standard principles applied to public employees in general, including recruitment examinations and guarantee of status (Imperial Household Agency employees, certain council and committee members, etc.).

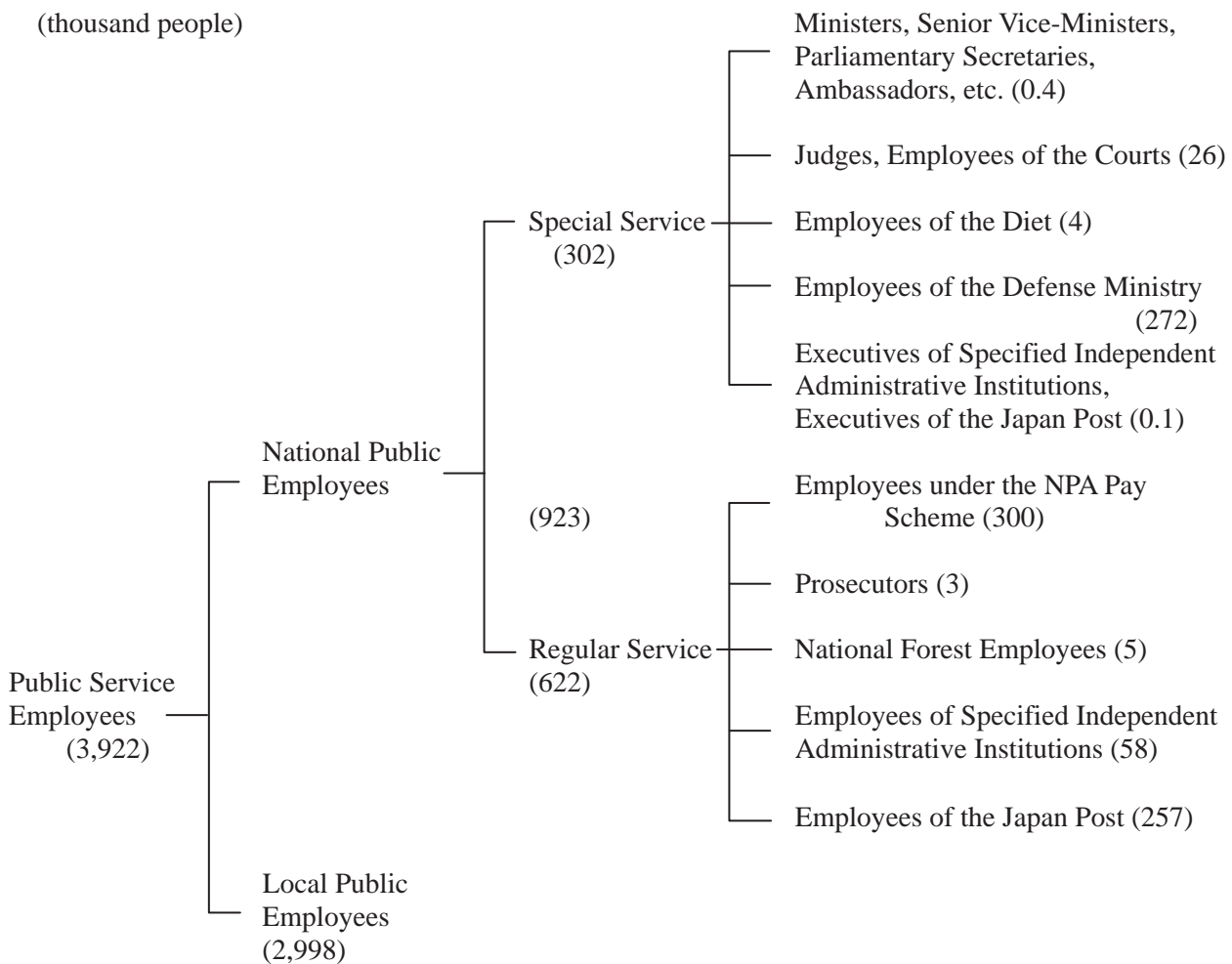
All other public employees not classified into the Special Service are considered to be Regular Service public employees and, given that they should acquit their duties fairly and with neutrality, they are supposed to be governed by the various stipulations of the NPSA, including the exclusion of favoritism, personal status guarantee, and strict discipline. This sector includes Prosecutors and employees engaged in the National Forestry Service.

With regard to local government employees, they are organized in almost exactly the same manner as national public employees, with only slight differences. The positions of Special Service local public employees are the same as the classification of Special Service national public employees, with the exception that part-time advisor and counselor jobs, which are classed as Regular Service on the national level, are set as Special Service in the local context. Regular Service local public employees are those not in the Special Service.

In recent years, the number of national public employees has been decreasing. It is now approximately 923,000 due to reasons such as changing National Universities to Independent Administrative Institutions and the transfer of personnel to Non-Public Servant Type. The number of public employees including local government employees is approximately 3.922 million.

Number of National Public Employees and Local Public Employees and their Classification

(thousand people)



Notes:

- (1) The number of National Public Employees, excluding the below, is the personnel quota allocated as of the end of FY 2007.
- (2) The number of executives at Specified Independent Administrative Institutions is the number of full-time executives as of October 1, 2006.
- (3) The number of executives at Japan Post is the number of full-time executives as of October 1, 2006.
- (4) The number of employees at Specified Independent Administrative Institutions is the total number of full-time employees on January 1, 2007.
- (5) The number of employees at Japan Post is the number as of March 31, 2006.
- (6) The number of local public employees is the number of Regular Service local public employees according to the FY 2006 Local Public Institution Personnel Quota Control Survey. (Source: Ministry of Internal Affairs and Communication)
- (7) Numbers may not be exact due to rounding.